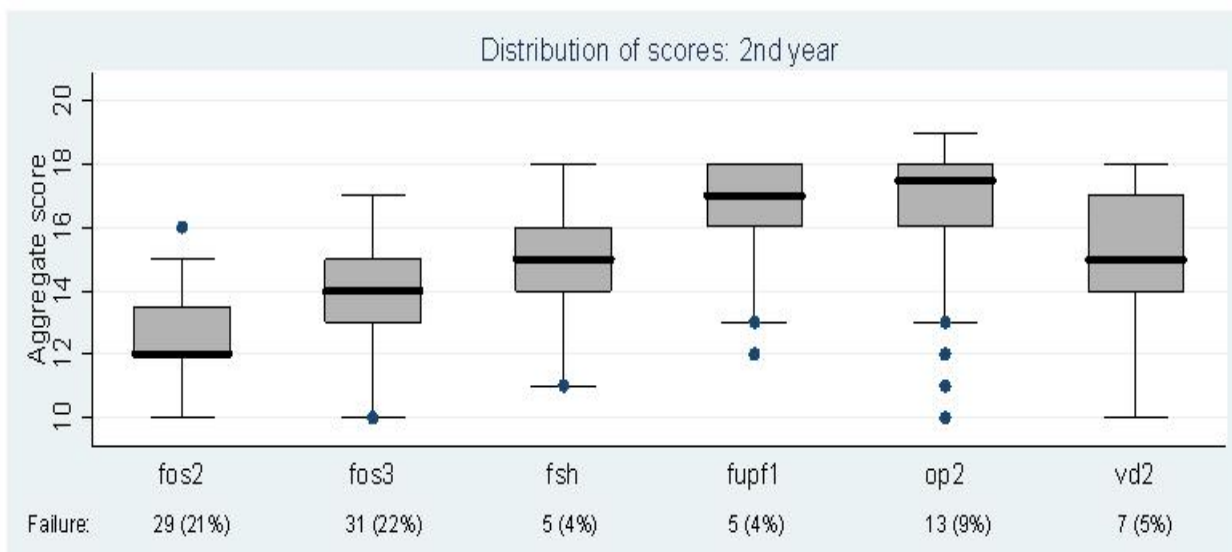


2ND YEAR

DISTRIBUTION OF STUDENT SCORES (*)



Legend

FOS 2 – Functional and Organic Systems II

FOS 3 – Functional and Organic Systems III

FSH – Family, Society and Health

FUPF 1 – Follow-up of a Family I

OP 2 – Option Project II

VD 2 – Vertical Domains II

(*) Output provided by the database of SHS-UM Longitudinal Project.

FUNCTIONAL AND ORGANIC SYSTEMS II

Overall Evaluation of Curricular Area

Nuclear items		1	2	3	4	5	6	7	8	9	10	11	12
2009/2010	Completely disagree	0	0	0	4	1	0	0	0	1	2	1	1
	Strongly disagree	1	1	0	14	0	2	2	0	2	0	1	0
	Disagree	6	8	1	40	11	5	8	2	14	16	12	5
	Unfavourable responses	6	9	1	57	12	7	10	2	16	18	14	6
	Agree	52	57	39	36	64	50	63	66	56	46	49	38
	Strongly agree	31	27	32	4	19	31	21	23	18	27	25	33
	Completely agree	10	7	28	2	2	10	4	6	6	7	10	21
	Favourable responses	94	91	99	42	84	91	88	96	81	80	85	92
No opinion	0	0	0	1	4	2	2	2	3	2	2	2	
2008/2009	Unfavourable responses	2	9	4	43	19	13	21	12	20	22	16	2
	Favourable responses	98	91	96	57	79	86	79	88	78	69	78	98
	No opinion	0	0	0	0	2	1	0	0	2	9	7	0

Method items		1	2	3	4	5	6	7	8	9	10
2009/2010	Completely disagree	6	6	4	0	2	0	0	0	5	2
	Strongly disagree	10	9	9	0	2	0	1	0	6	4
	Disagree	18	30	40	6	14	9	8	1	30	16
	Unfavourable responses	34	45	53	6	18	9	9	1	40	23
	Agree	48	38	33	58	42	39	32	31	35	60
	Strongly agree	13	14	10	29	23	37	29	34	15	13
	Completely agree	3	1	3	5	13	14	23	30	10	4
	Favourable responses	64	53	46	92	78	90	84	95	60	77
No opinion	2	2	1	2	3	2	7	4	0	1	
2008/2009	Unfavourable responses	63	71	29	12	14	12	9	4	9	19
	Favourable responses	37	27	71	88	84	88	89	93	90	78
	No opinion	0	1	0	0	1	0	2	2	1	3

Evaluation of Academic Faculty

		1	2	3	4	5	6	7	8
2009/2010	Completely disagree	0	0	0	0	0	0	0	0
	Strongly disagree	1	0	1	1	1	1	1	1
	Disagree	4	3	5	7	7	7	6	6
	Unfavourable responses	4	3	6	8	8	9	7	7
	Agree	22	23	26	27	28	28	27	27
	Strongly agree	33	29	33	30	29	30	31	33
	Completely agree	36	38	29	28	28	27	29	26
	Favourable responses	90	89	88	85	85	85	87	86
No opinion	5	7	6	6	6	6	6	7	
2008/2009	Unfavourable responses	8	7	9	11	13	11	10	9
	Favourable responses	91	92	89	87	85	87	89	85
	No opinion	1	2	1	2	3	2	2	6

FUNCTIONAL AND ORGANIC SYSTEMS III

Overall Evaluation of Curricular Area

Nuclear items		1	2	3	4	5	6	7	8	9	10	11	12
2009/2010	Completely disagree	0	2	0	4	1	1	1	1	1	1	3	0
	Strongly disagree	2	3	0	9	3	2	3	2	2	3	2	1
	Disagree	5	11	3	28	11	9	14	10	16	14	9	6
	Unfavourable responses	7	16	3	41	15	11	17	13	18	18	13	7
	Agree	44	41	28	45	56	47	58	53	43	47	52	33
	Strongly agree	38	34	44	11	22	34	21	25	27	25	20	34
	Completely agree	12	7	25	3	5	5	2	7	7	8	15	23
	Favourable responses	93	83	97	59	84	87	81	85	77	80	86	90
No opinion	0	2	1	0	2	2	2	2	4	2	1	3	
2008/2009	Unfavourable responses	5	9	6	23	20	12	12	11	14	13	12	4
	Favourable responses	95	91	94	77	79	88	87	89	84	82	85	95
	No opinion	0	0	0	0	1	0	1	0	2	5	4	1

Method items		1	2	3	4	5	6	7	8	9	10
2009/2010	Completely disagree	11	10	3	1	3	1	0	0	3	3
	Strongly disagree	7	9	6	1	2	2	0	0	1	3
	Disagree	17	28	24	10	19	7	10	3	5	10
	Unfavourable responses	35	47	34	12	23	9	10	3	9	15
	Agree	44	31	41	41	39	35	35	28	39	45
	Strongly agree	18	20	18	38	26	37	31	41	30	31
	Completely agree	3	1	7	9	9	18	20	24	22	9
	Favourable responses	65	52	66	87	74	90	85	93	91	85
No opinion	0	1	0	1	3	1	4	4	0	0	
2008/2009	Unfavourable responses	42	48	20	12	13	5	3	7	4	20
	Favourable responses	57	50	79	88	83	92	94	91	95	79
	No opinion	1	2	1	0	5	3	2	2	1	1

Evaluation of Academic Faculty

		1	2	3	4	5	6	7	8
2009/2010	Completely disagree	1	1	1	2	2	2	1	2
	Strongly disagree	1	1	1	1	1	2	1	1
	Disagree	3	3	6	8	7	8	6	7
	Unfavourable responses	5	4	8	10	10	11	9	10
	Agree	25	27	30	31	31	31	30	30
	Strongly agree	33	29	32	30	28	30	31	31
	Completely agree	28	29	21	19	20	19	21	19
	Favourable responses	86	85	83	80	80	80	82	80
No opinion	9	11	9	9	10	9	9	10	
2008/2009	Unfavourable responses	9	8	10	13	14	13	12	12
	Favourable responses	87	88	85	82	81	82	83	80
	No opinion	4	5	5	5	5	5	5	8

FAMILY, SOCIETY AND HEALTH

Overall Evaluation of Curricular Area

Nuclear items		1	2	3	4	5	6	7	8	9	10	11	12
2009/2010	Completely disagree	4	2	2	1	2	5	3	2	10	1	6	3
	Strongly disagree	5	8	6	2	3	8	7	8	7	9	9	7
	Disagree	16	18	10	21	24	16	25	21	26	23	33	11
	Unfavourable responses	25	28	18	24	30	29	36	32	43	33	48	22
	Agree	44	48	52	44	43	41	41	46	26	41	28	40
	Strongly agree	20	19	25	19	11	17	16	11	11	16	15	28
	Completely agree	11	3	6	12	3	7	4	8	3	4	3	9
	Favourable responses	75	70	82	75	57	65	61	65	40	61	47	76
	No opinion	0	2	0	1	14	6	2	3	17	6	5	2
2008/2009	Unfavourable responses	36	35	32	25	21	36	55	35	36	51	58	25
	Favourable responses	63	62	64	73	49	62	45	63	44	42	37	69
	No opinion	1	2	4	2	30	2	0	2	20	7	5	6

FOLLOW-UP OF A FAMILY I

Overall Evaluation of Curricular Area

Nuclear items		1	2	3	4	5	6	7	8	9	10	11	12
2009/2010	Completely disagree	2	2	4	3	3	4	3	2	4	4	4	4
	Strongly disagree	2	0	1	1	0	1	3	2	2	1	1	1
	Disagree	3	3	3	4	4	11	15	7	13	15	13	3
	Unfavourable responses	6	4	7	8	7	15	20	11	18	20	19	7
	Agree	42	46	32	40	37	30	36	46	39	42	42	38
	Strongly agree	29	26	36	26	25	35	28	27	22	27	26	29
	Completely agree	23	22	25	25	17	19	15	15	8	9	12	24
	Favourable responses	94	95	93	91	79	83	79	88	68	78	80	92
No opinion	0	1	0	1	14	2	1	2	13	2	2	1	
2008/2009	Unfavourable responses	16	31	14	28	21	37	59	34	30	40	43	18
	Favourable responses	84	69	86	71	51	61	40	66	63	55	54	82
	No opinion	0	0	0	1	27	2	1	0	7	5	3	0

OPTION PROJECT II

Overall Evaluation of Curricular Area

		1	2	3	4	5	6	7	8
2009/2010	Completely disagree	1	1	2	2	4	3	2	2
	Strongly disagree	1	0	1	0	5	2	1	2
	Disagree	1	4	5	3	15	9	2	2
	Unfavourable responses	2	5	7	5	24	13	5	6
	Agree	27	40	36	38	36	17	15	21
	Strongly agree	40	30	32	28	23	27	36	32
	Completely agree	30	16	15	27	14	39	44	41
	Favourable responses	98	85	83	93	73	83	95	94
No opinion	0	10	9	2	3	4	0	0	
2008/2009	Unfavourable responses	1	4	2	18	30	9	0	3
	Favourable responses	98	73	80	81	68	88	100	95
	No opinion	1	23	18	1	2	3	0	2

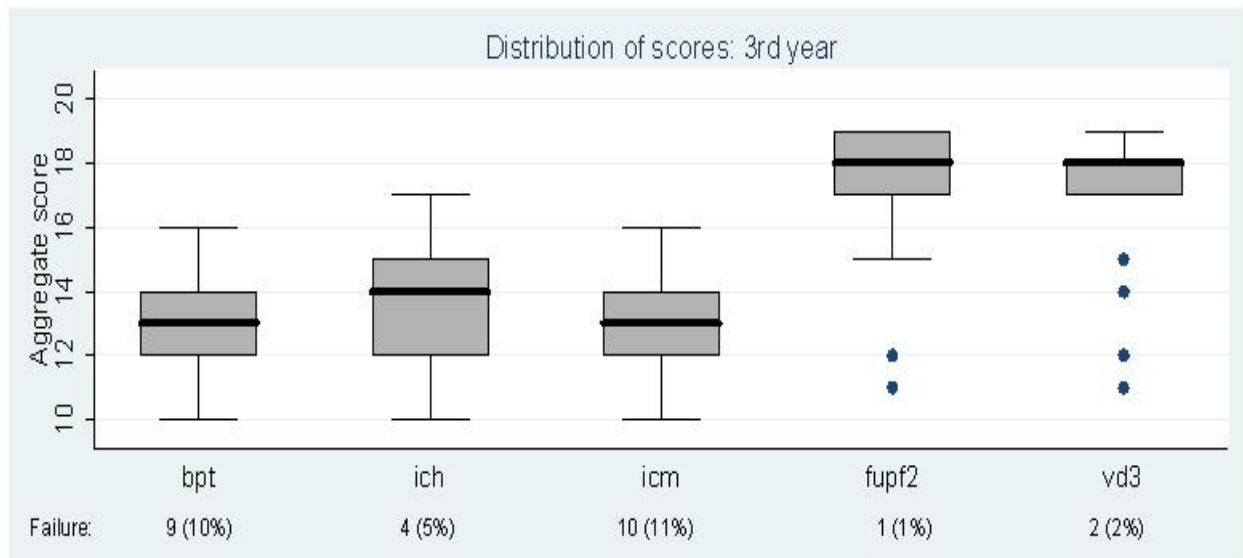
VERTICAL DOMAINS II

Overall Evaluation of Curricular Area

		1	2	3	4	5	6	7	8	9	10	11	12
2009/2010	Completely disagree	6	4	6	5	7	-	4	3	7	-	7	9
	Strongly disagree	5	5	3	2	7	-	2	3	3	-	3	7
	Disagree	15	15	16	11	13	-	16	11	22	-	7	28
	Unfavourable responses	25	24	25	17	27	-	23	18	32	-	17	43
	Agree	42	50	48	48	34	-	44	50	31	-	38	33
	Strongly agree	23	18	20	20	17	-	22	20	16	-	28	18
	Completely agree	10	5	7	13	9	-	9	11	8	-	14	2
	Favourable responses	75	73	75	81	60	-	75	80	55	-	80	53
No opinion	0	3	1	2	13	-	2	2	13	-	3	3	
2008/2009	Unfavourable responses	36	38	33	31	41	-	30	20	36	-	33	51
	Favourable responses	64	61	67	67	53	-	69	80	60	-	67	46
	No opinion	0	1	0	2	6	-	1	0	5	-	0	3

3RD YEAR

DISTRIBUTION OF STUDENT SCORES (*)



Legend

BPT – Biopathology and Introduction to Therapeutics

ICH – Introduction to Community Health

ICM – Introduction to Clinical Medicine

FUPF 2 – Follow-up of a Family II

VD 3 – Vertical Domains III

(*) Output provided by the database of SHS-UM Longitudinal Project.

BIOPATHOLOGY AND INTRODUCTION TO THERAPEUTICS

Overall Evaluation of Curricular Area

Nuclear items		1	2	3	4	5	6	7	8	9	10	11	12
2009/2010	Completely disagree	0	0	0	1	1	1	4	0	0	5	1	1
	Strongly disagree	0	3	0	7	3	0	4	3	4	5	3	0
	Disagree	4	8	7	20	11	7	22	8	12	26	18	4
	Unfavourable responses	4	11	7	28	14	8	30	11	16	37	22	5
	Agree	46	53	41	53	63	56	47	59	62	32	45	54
	Strongly agree	39	31	36	16	18	28	18	24	12	17	21	28
	Completely agree	11	5	17	3	3	7	3	4	7	9	7	11
	Favourable responses	96	89	93	72	84	91	68	87	80	58	72	92
No opinion	0	0	0	0	1	1	1	3	4	5	5	3	
2008/2009	Unfavourable responses	7	16	5	27	35	9	24	7	13	15	24	15
	Favourable responses	93	82	95	73	62	91	75	93	84	80	71	82
	No opinion	0	2	0	0	4	0	2	0	4	5	5	4

Method items		1	2	3	4	5	6	7	8	9	10
2009/2010	Completely disagree	12	9	1	0	1	1	9	4	0	1
	Strongly disagree	20	15	4	1	0	1	5	1	3	4
	Disagree	17	24	14	11	12	11	21	12	5	7
	Unfavourable responses	49	48	20	12	13	13	36	17	8	12
	Agree	38	40	57	68	58	55	26	33	41	54
	Strongly agree	12	11	22	17	28	25	13	12	24	26
	Completely agree	0	0	1	3	1	5	3	17	26	7
	Favourable responses	50	51	80	88	87	85	42	62	91	87
No opinion	1	1	0	0	0	1	22	21	1	1	
2008/2009	Unfavourable responses	27	45	17	15	5	15	13	4	16	38
	Favourable responses	71	53	83	85	95	85	64	75	84	60
	No opinion	2	2	0	0	0	0	24	22	0	2

Evaluation of Academic Faculty

		1	2	3	4	5	6	7	8
2009/2010	Completely disagree	2	2	3	3	3	4	3	2
	Strongly disagree	2	3	3	3	3	3	3	3
	Disagree	5	7	11	13	2	12	10	10
	Unfavourable responses	9	12	17	19	19	18	16	16
	Agree	21	23	25	25	25	26	27	26
	Strongly agree	31	28	31	29	27	28	29	28
	Completely agree	36	34	26	25	25	25	26	25
	Favourable responses	89	86	81	79	78	80	82	78
No opinion	2	2	2	2	4	2	2	6	
2008/2009	Unfavourable responses	3	5	8	10	9	10	9	6
	Favourable responses	94	92	90	87	88	87	89	88
	No opinion	3	3	3	3	3	3	3	6

INTRODUCTION TO COMMUNITY HEALTH

Overall Evaluation of Curricular Area

Nuclear items		1	2	3	4	5	6	7	8	9	10	11	12
2009/2010	Completely disagree	4	1	4	1	2	4	2	4	6	2	10	5
	Strongly disagree	7	12	7	4	4	11	17	9	10	10	11	7
	Disagree	10	16	24	7	12	25	31	23	30	31	36	23
	Unfavourable responses	21	29	35	12	19	40	51	36	46	43	57	36
	Agree	50	51	41	52	47	42	37	44	37	38	26	46
	Strongly agree	22	12	17	22	11	14	10	14	9	11	10	14
	Completely agree	7	7	6	12	2	4	2	6	2	2	1	4
	Favourable responses	79	71	65	86	60	59	49	64	48	52	37	63
No opinion	0	0	0	1	21	1	0	0	6	5	6	1	
2008/2009	Unfavourable responses	0	4	7	4	9	2	5	2	23	9	11	11
	Favourable responses	100	96	93	95	91	95	95	93	61	88	88	89
	No opinion	0	0	0	2	0	4	0	5	16	4	2	0

Method items		1	2	3	4	5	6	7	8	9	10
2009/2010	Completely disagree	7	11	1	13	5	2	9	6	1	2
	Strongly disagree	6	7	0	12	4	9	13	9	1	6
	Disagree	11	22	5	20	24	21	20	16	5	10
	Unfavourable responses	24	40	6	45	33	32	41	31	7	19
	Agree	38	38	41	34	35	38	15	19	43	53
	Strongly agree	21	11	28	10	12	12	4	10	35	20
	Completely agree	12	6	23	6	11	10	3	4	13	7
	Favourable responses	71	55	93	50	59	60	21	32	91	80
No opinion	5	5	1	5	9	7	38	37	1	1	
2008/2009	Unfavourable responses	9	20	5	11	7	7	7	0	0	5
	Favourable responses	91	77	95	84	93	91	27	41	100	95
	No opinion	0	4	0	5	0	2	66	59	0	0

Evaluation of Academic Faculty

		1	2	3	4	5	6	7	8
2009/2010	Completely disagree	1	1	1	1	1	1	1	1
	Strongly disagree	1	1	1	2	2	2	2	2
	Disagree	4	4	7	9	8	8	7	8
	Unfavourable responses	6	5	9	11	11	11	10	10
	Agree	23	22	27	29	30	29	29	28
	Strongly agree	31	28	32	30	28	30	30	31
	Completely agree	36	40	27	25	26	25	26	24
	Favourable responses	90	90	86	84	84	84	86	83
No opinion	4	5	5	5	5	5	5	7	
2008/2009	Unfavourable responses	6	5	8	11	11	11	10	10
	Favourable responses	91	91	88	86	84	86	87	84
	No opinion	3	4	3	4	4	4	4	7

INTRODUCTION TO CLINICAL MEDICINE

Overall Evaluation of Curricular Area

Nuclear items		1	2	3	4	5	6	7	8	9	10	11	12
2009/2010	Completely disagree	4	2	0	1	11	2	1	1	1	1	1	0
	Strongly disagree	0	5	0	1	13	7	1	1	0	1	2	0
	Disagree	11	18	1	14	19	12	18	7	6	5	12	1
	Unfavourable responses	14	25	1	17	43	21	20	10	7	7	15	1
	Agree	42	43	29	40	30	42	54	53	51	42	37	32
	Strongly agree	29	25	42	34	20	30	21	29	33	28	27	40
	Completely agree	15	7	28	10	2	6	5	8	8	16	14	26
	Favourable responses	86	75	99	83	52	77	80	90	93	86	79	99
	No opinion	0	0	0	0	5	1	0	0	0	7	6	0
2008/2009	Unfavourable responses	2	4	0	33	10	21	21	12	6	12	4	0
	Favourable responses	98	92	100	67	81	73	79	88	90	83	94	100
	No opinion	0	4	0	0	10	6	0	0	4	6	2	0

Evaluation of Clinical Tutors/Services

		1	2	3	4	5	6	7	8	9	10
2009/2010	Completely disagree	1	2	1	2	3	2	2	2	2	1
	Strongly disagree	2	1	1	1	3	5	1	8	2	2
	Disagree	3	3	10	7	6	9	2	9	8	1
	Unfavourable responses	7	7	13	10	13	16	6	20	13	5
	Agree	20	21	15	22	20	21	21	21	15	22
	Strongly agree	33	38	34	33	23	31	32	25	28	33
	Completely agree	40	34	38	35	44	32	41	33	40	40
	Favourable responses	93	93	87	90	86	84	94	79	83	95
	No opinion	0	0	0	0	1	0	0	1	5	0
2008/2009	Unfavourable responses	6	2	0	2	4	12	0	4	0	0
	Favourable responses	92	98	100	98	96	88	100	96	100	100
	No opinion	2	0	0	0	0	0	0	0	0	0

Evaluation of Seminars/Speakers

		1	2	3	4	5	6
2009/2010	Completely disagree	2	2	2	2	2	2
	Strongly disagree	2	2	2	2	2	2
	Disagree	6	7	10	9	7	10
	Unfavourable responses	9	10	14	13	10	14
	Agree	35	36	37	35	37	35
	Strongly agree	29	29	25	24	27	24
	Completely agree	16	15	12	11	14	13
	Favourable responses	81	79	74	69	78	72
No opinion	10	10	12	18	11	14	
2008/2009	Unfavourable responses	5	4	22	3	5	10
	Favourable responses	94	92	74	49	93	85
	No opinion	1	4	5	48	2	4

FOLLOW-UP OF A FAMILY II

Overall Evaluation of Curricular Area

Nuclear items		1	2	3	4	5	6	7	8	9	10	11	12
2009/2010	Completely disagree	4	3	5	4	1	3	7	4	5	5	9	5
	Strongly disagree	1	5	1	1	3	7	7	7	3	4	5	4
	Disagree	12	16	12	8	11	17	16	5	3	17	22	11
	Unfavourable responses	17	24	19	13	15	26	30	16	11	27	36	20
	Agree	47	48	47	46	43	41	43	47	57	40	32	42
	Strongly agree	22	17	23	25	19	18	18	22	19	17	20	30
	Completely agree	13	11	11	14	8	12	8	12	9	8	5	7
	Favourable responses	83	76	81	86	71	71	69	82	85	65	58	78
No opinion	0	0	0	1	14	3	1	3	4	8	5	1	
2008/2009	Unfavourable responses	8	14	18	4	6	25	27	8	12	8	40	28
	Favourable responses	90	84	78	92	66	71	67	84	70	80	58	70
	No opinion	2	2	4	4	28	4	6	8	18	12	2	2

VERTICAL DOMAINS III

Overall Evaluation of Curricular Area

		1	2	3	4	5	6	7	8	9	10	11	12
2009/2010	Completely disagree	14	15	13	10	17	-	14	15	13	-	16	24
	Strongly disagree	10	10	17	11	13	-	10	10	17	-	11	14
	Disagree	17	23	19	20	17	-	17	23	19	-	11	27
	Unfavourable responses	41	48	49	41	47	-	41	48	49	-	39	65
	Agree	37	32	34	34	23	-	37	32	34	-	36	10
	Strongly agree	11	8	7	10	9	-	11	8	7	-	17	13
	Completely agree	6	6	6	10	6	-	6	6	6	-	3	4
	Favourable responses	54	46	47	54	37	-	54	46	47	-	56	27
No opinion	4	6	4	4	16	-	4	6	4	-	6	8	
2008/2009	Unfavourable responses	24	17	29	12	27	-	24	17	29	-	25	39
	Favourable responses	76	69	71	81	44	-	76	69	71	-	75	54
	No opinion	0	14	0	7	29	-	0	14	0	-	0	7