



School of Medicine

ANNUAL REPORT

2018-2019

ANNEX VIII – Organization and Management

University of Minho

1. EM GOVERNING AND ADVISORY BODIES, SUBUNITS AND COORDINATING BOARDS

EM GOVERNING BODIES

The School's Council

The School's Council is the collegial representative body responsible for management and general coordination of the School. The School's Council meets quarterly and integrates faculty, researchers, students and staff (the present composition is presented in point 2)

The School Presidency

The School Presidency integrates the President and the Vice-Presidents of the EM and, as the Directive Board of the EM, oversees the management of the School, meeting on a weekly basis. The present composition is: Nuno Sousa (President); Jorge Pedrosa (Vice-President for Research) Joana Palha (Vice-President for Education); Pedro Morgado (Vice-President for Planning and External Affairs).

The Scientific Council

The Scientific Council is responsible for the scientific policy for the EM, namely in what concerns the general guidelines for the planning and development of research, teaching and extension activities and matters related to the recruitment and promotion of the academic staff (the present composition is in point 2).

The Pedagogical Council

The Pedagogical Council is responsible for defining and supervising the pedagogical policy of the EM undergraduate and post-graduate degree programs (the present composition is in point 2).

EM ADVISORY BODIES

The Advisory Council of the School

The present Advisory Council of the School (ACS) was nominated in 2017, meets every two years and its composition is as follows.

UMinho/EM Members :

Rector of University of Minho (invited member) and the EM Presidency (Nuno Sousa, Jorge Pedrosa, Joana Palha and Pedro Morgado).

External Members:

Alistair Warren (University of Sheffield, United Kingdom); Arsélio Pato de Carvalho (University of Coimbra, Portugal); Fernando Lopes da Silva (University of Amsterdam, Holand); Joseph S. Gonnella (Thomas Jefferson University, United States of America); António Murta (Pathena, Portugal); Vasco Louro (Champalimaud Clinical Centre, Portugal); Claudia Schlegel (Bern School for Higher Studies in Nursing, Switzerland) ÷ President of *Administração Regional de Saúde do Norte Portugal (ARS-N), Portugal*; President of *Ordem dos Médicos, Portugal*

The external members have designated Prof. Fernando Lopes da Silva as the ACS Coordinator.

Unfortunately, Prof. Fernando Lopes da Silva passed away recently. The School would like to thank Prof. Fernando Lopes da Silva for his friendship and support towards our project.

The Advisory Council of the Scientific-Pedagogical Subunits

The Advisory Council of the Scientific-Pedagogical Subunits is the body that advises about the subjects involving the Scientific-Pedagogical Subunits and is composed by the coordinators of the Scientific-Pedagogical Subunits.

The School Secretary

The School Secretary coordinates all the activity of the school services and supports the School Presidency in the technical subjects. The present School Secretary is Doutora Ana Salgueira.

EM COORDINATING BOARDS**The ICVS Directive Board**

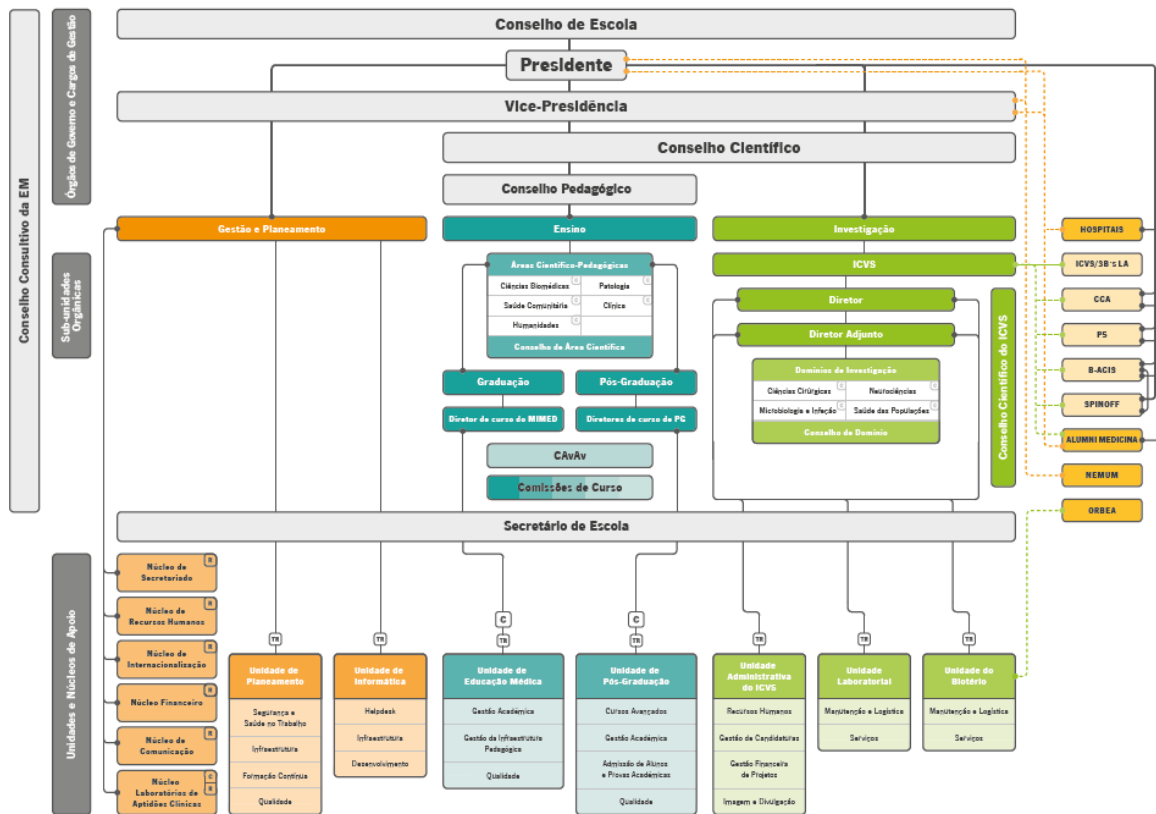
The ICVS Directive Board is the collegial body with functions of management and coordination of the ICVS. The Directive Board is responsible for ensuring the normal functioning and progress of activities and projects, promoting the articulation between the different Research Domains. The Directive Board of ICVS integrates: Jorge Correia-Pinto (ICVS Director), João Carlos Sousa (ICVS Deputy Director), João Bessa (Coordinator of the Neurosciences Research Domain), Fátima Baltazar (Coordinator of the Surgical Sciences Research Domain), Margarida Correia-Neves (Coordinator of the recently launched Population Health Research Domain), Agostinho Carvalho (Coordinator of the Microbiology and Infection Research Domain), Joana Palha (Vice-President for Education) and Nuno Sousa (Invited as EM President).

The Course Committees

The Course Committees are coordinated by EM Pedagogical Council. Their main responsibilities include the daily management of the courses, promoting the coordination of curricular units, seminars, internships and other activities within each degree, and the monitoring of the development of the degree programs proposing needed adjustments to the Pedagogical Council.

The EM has four Course Committees: the Committee for the Integrated Master Degree in Medicine, the Committee for the Master Degree in Health Sciences, the Committee for PhD Degree in Medicine, including the MD/PhD program, and the Committee for the PhD Degree in Health Sciences, including the PhD Program in Health Sciences (applied).

The Coordination of the Organic Subunits and of the Units and Support Offices



EM SUBUNITS

The EM Scientific-Pedagogical Subunits: the Scientific Areas

The Scientific Areas are the EM organizational subunits, equivalent to the departments foreseen in the Statutes of the University of Minho, which constitute the basic cells of scientific-pedagogical organization and management of resources within each consolidated area of knowledge.

The EM has five Scientific Areas, which are statutorily acknowledged: Biomedical Sciences, Pathology, Community Health, Clinics and Humanities in Medicine. The duties of the Scientific Areas are to coordinate the curricular development and delivery in the corresponding areas, and assure the implementation of the adequate educational strategies and methods. The Scientific Areas agglutinate and articulate the curricular areas of the Medical Curriculum promoting the articulation between them, thus guaranteeing the overall coherence of the curriculum, paying attention to and eliminating omissions or repetitions.

The present Scientific Areas Coordinators are: Fernando Rodrigues for Biomedical Sciences; Jorge Pedrosa for Pathology; Jaime Correia de Sousa for Community Health; João Cerqueira for Clinics; Cecília Leão for Humanities in Medicine.

The Curricular Units and Modules of the Integrated Master Program in Medicine and the corresponding Coordinators are listed in point 3.

EM Research Subunit: the Life and Health Sciences Research Institute (ICVS)

The ICVS is the research unit incorporated in the EM, a subunit according to the EM Statutes, in which the scientific and technological development activities of the School are developed. The ICVS has its own governing bodies, according to the rules for research units integrated in the national system of Science and Technology, namely the Director (Jorge Correia-Pinto) and the Deputy Director (João Carlos Sousa), the Directive Board, the Scientific Council, presided by the Director, that integrates all the PhD members of ICVS, and the External Advisory Committee.

2. PRESENT COMPOSITION OF THE SCHOOL'S COUNCIL, THE SCIENTIFIC COUNCIL AND THE PEDAGOGIC COUNCIL

(Reference date 30/06/2019)

The School's Council

Fernando José Santos Rodrigues (President)
João Carlos Cruz Sousa
João José Fernandes Cardoso Araújo Cerqueira
António Jaime Botelho Correia de Sousa
Patrícia Espinheira Sá Maciel
Patrício Ricardo Soares Costa
Cristina Isabel Nogueira Silva
João Miguel Seíça Bessa Peixoto
Vitor Hugo Eira Pereira
Sandra Maria Araújo Costa
Bruno Filipe Marques da Costa
Sandra Maria Teixeira Coutinho Pereira
Filipa da Silva Rabaldo
Rui Jorge Sousa da Silva
Caroline Isabel Borges Pereira

Scientific Council

Nuno Jorge Carvalho de Sousa (President)
Jorge Manuel Nunes Correia Pinto
Joana Almeida Pacheco Palha
João Carlos Cruz Sousa
João José Fernandes Cardoso Araújo Cerqueira
António Gil Pereira Castro
Fernando José Santos Rodrigues
Patrício Ricardo Soares Costa
Maria Margarida Teles Vasconcelos Correia Neves
António Jaime Botelho Correia de Sousa
Jorge Manuel Rolo Pedrosa
Nuno Miguel Sampaio Osório

Pedagogic Council

Joana Almeida Pacheco Palha (President)
João José Fernandes Cardoso Araújo Cerqueira
Patrícia Espinheira Sá Maciel
Fernando José Santos Rodrigues
Jorge Manuel Rolo Pedrosa
António Jaime Botelho Correia de Sousa
José Miguel Gomes Moreira Pêgo
Rafael Costa Simões Vasconcelos
José Diogo Teles da Silva Pereira
Flávia Filipa Ribeiro Freitas
Maria do Mar Lopes Mateus da Costa
Jorge Manuel Ferreira Machado
Rita Matos Sousa
Sofia Pereira das Neves
Sónia Isabel Nunes Guerra Gomes

3. INTEGRATED MASTER PROGRAM IN MEDICINE: CURRICULAR UNITS AND MODULES COORDINATORS (2018-2019)

A – Six-year Integrated Master Program in Medicine

Curricular Year	Curricular Unit Module	Coordinator
1 st	Introduction to the Medical Degree	MANUEL JOÃO COSTA
	Molecules and Cells	PAULA LUDOVICO
	From Anatomy to Cellular Physiology	Paula Ludovico
	Molecular Genetics Foundations	Fernando Rodrigues
	Proliferation Differentiation Cellular and Death	Fernanda Marques
	Functional and Organic Systems I	CARLA ROLANDA
	Musculoskeletal System	
	General Introduction and Skin I	Nuno Lamas
	General Introduction and Skin II	Hugo Almeida
	Digestive System	Ana Célia Caetano
Training in a Health Centre	ANDREIA EIRAS	
First Aid	JOSÉ MIGUEL PÊGO	
Option Project I	FERNANDO RODRIGUES	
Vertical Domains I	CECÍLIA LEÃO	
2 nd	Functional and Organic Systems II	PATRÍCIA MACIEL
	Cardiorespiratory System	
	Cardiovascular System	Vitor Hugo Pereira
	Respiratory System	Jorge Correia Pinto
	Urinary System	Emanuel Dias
	Reproductive System	Cristina Silva
	Functional and Organic Systems Iii	JOÃO SOUSA
	Nervous System	
	Central Nervous System	Tiago Gil Oliveira
	Peripheral Nervous System	Pedro Morgado
Endocrine System	João Sousa	
Family, Society and Health I	JOHN YAPHE	
Option Project II	ADHEMAR LONGATTO	
Vertical Domains II	CECÍLIA LEÃO	

A – Six-year Integrated Master Program in Medicine (cont.)

Curricular Year	Curricular Unit Module	Coordinator
3rd	Biopathology and Introduction to Therapeutics	JOSÉ MIGUEL PÊGO
	Musculoskeletal, immune and blood systems Inflammation/immunopathology	António Gil Castro
	Microbiology and Infection Pathophysiological mechanisms in host pathogen / interaction	Margarida Correia-Neves
	Nervous, Digestive and Endocrine Systems Genetic and environmental pathophysiology's	Alexandra Miranda
	Cardiovascular, Respiratory and Urinary systems Multi-factorial diseases	Vitor Hugo Pereira
	Introduction to Community Health	PEDRO GOMES PEREIRA
	Introduction to Clinical Medicine	JOÃO CERQUEIRA
	Family, Society and Health II	JOHN YAPHE
Vertical Domains III	CECÍLIA LEÃO	
4th	Health Centre Residencies I	LUÍS FIGUEIREDO
	Medicine I Residency	NUNO SOUSA
	Pneumology	Nuno Sousa
	Cardiology	Vitor Hugo Pereira
	Gastroenterology	Carla Rolanda
	Maternal and Child Health Residency	JORGE CORREIA PINTO
	Gynaecology / Obstetrics	Cristina Silva
	Pediatrics	Jorge Correia Pinto
	From Clinical to Molecular Biology I	NUNO SOUSA
	Option Project III	FILIPA RIBEIRO
	Clinical Neurosciences	JOÃO BESSA
	Neurology	João Cerqueira
Psychiatry	João Bessa	
Vertical Domains IV	CECÍLIA LEÃO	
5th	Health Centre Residencies II	CLÁUDIA BULHÕES
	Surgery Residency	NUNO SOUSA
	General Surgery	Nuno Sousa
	Orthopedics	João Espregueira-Mendes
	Neurosurgery	João Cerqueira
	Urology	Estêvão Lima
	Otorhinolaryngology	Nuno Sousa
	Ophthalmology	Nuno Sousa

	Medicine II Residency	NUNO SOUSA
	Infectious Diseases	Ana Horta
	Endocrinology	Nuno Sousa
	Hemato-oncology	Isabel Castro
	Reumatology	Carlos Capela
	Nefrology	Jorge Cotter
	Dermatology	Nuno Sousa
	Optional Residencies	PEDRO MORGADO
	From Clinical to Molecular Biology II	NUNO SOUSA
	Vertical Domains V	CECÍLIA LEÃO

A – Six-year Integrated Master Program in Medicine (cont.)

Curricular Year	Curricular Unit Module	Coordinator
6th	Health Centre Residency III- Final Training	PEDRO FONTE
	Hospital Residencies - Final Training	NUNO SOUSA
	From Clinical to Molecular Biology III	NUNO SOUSA
	Optional Project – Final Training	PATRÍCIO COSTA / TIAGO GIL OLIVEIRA

B – Four-year Graduate Entry Program in Medicine

Fundamentals of Medicine	CRISTINA SILVA
M1 – Metabolism	Carla Rolanda
M2- Circulatory	Vitor Hugo Pereira
M3- Respiratory	Vitor Hugo Pereira
M4- Genito-urinary	Patrícia Maciel
M5- Immunology and Infection	Carlos Capela
M6- Nervous and Locomotor	João Bessa
Community Health and Social Sciences and Humanities	PATRÍCIO COSTA

4. POST-GRADUATION PROGRAMS: CURRICULAR UNITS COORDINATORS (2017-2018)

A – Master in Health Sciences

Curricular Unit	Coordinator
Biostatistics in Health Sciences	PATRÍCIO COSTA
Bioinformatics in Health Sciences	NUNO OSÓRIO
Laboratory Animal Sciences:	MARGARIDA CORREIA NEVES
Advanced Courses	JOANA PALHA
Laboratory Rotations	JOÃO SOUSA
Fundamentals in Genetics, Development and Neoplasia	FÁTIMA BALTAZAR
Fundamentals in Immunology and Infection	JORGE PEDROSA
Fundamentals in Neurosciences	TIAGO GIL OLIVEIRA
Research Methodologies	MANUEL JOÃO COSTA
Preparation and Presentation of the Dissertation Project	PATRÍCIA MACIEL
Dissertation	PATRÍCIA MACIEL

B – PhD in Health Sciences

Curricular Unit	Coordinator
Biostatistics in Health Sciences	PATRÍCIO COSTA
Bioinformatics in Health Sciences	NUNO OSÓRIO
Laboratory Animal Sciences	MARGARIDA CORREIA NEVES
Advanced Courses	JOANA PALHA
Laboratory Rotations	PATRÍCIA MACIEL
Fundamentals in Genetics, Development and Neoplasia	FÁTIMA BALTAZAR
Fundamentals in Immunology and Infection	JORGE PEDROSA
Fundamentals in Neurosciences	TIAGO GIL OLIVEIRA
Research Methodologies	FERNANDO RODRIGUES
Congress Presentation	FERNANDO RODRIGUES
Scientific Paper	FERNANDO RODRIGUES
Preparation and Presentation of the Thesis Plan	FERNANDO RODRIGUES
Thesis	FERNANDO RODRIGUES

C – PhD in Medicine

Curricular Unit	Coordinator
Biostatistics in Health Sciences	PATRÍCIO COSTA
Bioinformatics in Health Sciences	NUNO OSÓRIO
Laboratory Animal Sciences	MARGARIDA CORREIA NEVES
Advanced Courses	JOANA PALHA
Laboratory Rotations	PATRÍCIA MACIEL
Fundamentals in Genetics, Development and Neoplasia	FÁTIMA BALTAZAR
Fundamentals in Immunology and Infection	JORGE PEDROSA
Fundamentals in Neurosciences	TIAGO GIL OLIVEIRA
Research Methodologies	MANUEL JOÃO COSTA
Congress Presentation	MARGARIDA CORREIA NEVES
Scientific Paper	MARGARIDA CORREIA NEVES
Preparation and Presentation of the Thesis Plan	TIAGO GIL OLIVEIRA
Thesis	TIAGO GIL OLIVEIRA

D – Inter-University Doctoral Programme in Ageing and Chronic Disease (PhDOC)

Curricular Unit	Coordinator
Laboratory Rotation III	MARGARIDA CORREIA NEVES
Ageing and Chronic Diseases II	MARGARIDA CORREIA NEVES